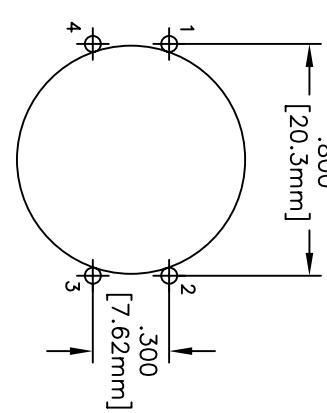
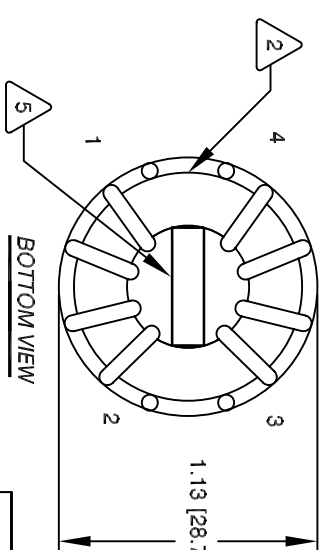
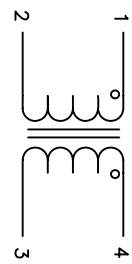
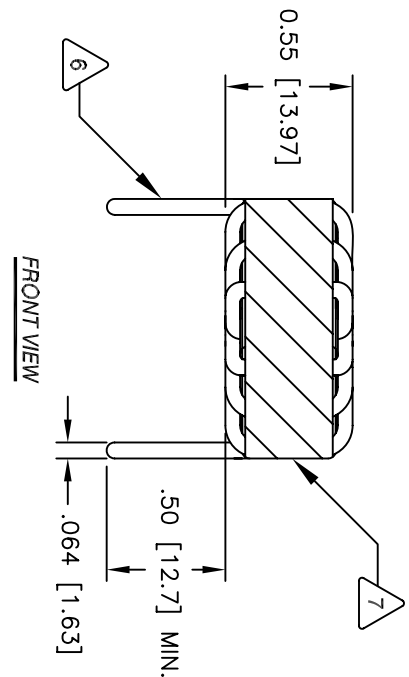


The information contained in this drawing is the sole property of CMS Coil Winding Specialist. Any reproduction in part or whole without written permission of CMS Coil Winding Specialist is prohibited.

REVISION HISTORY						
REV	ECN	DESCRIPTION	BY	DATE	CHK	DATE
A		PRODUCTION RELEASE	GN	12/22/09	AK	12/22/09



- 9 SUPERCEDDE CM-6SR3U-23A AND CM-6RSU-23A
- 8 BULT TO ROHS COMPLIANCE AND LEAD FREE
- 7 WHERE SHOWN, USING A PERMANENT MARKING METHOD MARK PART NUMBER AND REVISION WRAP INDUCTOR WITH 3M #79 or EQUAL
- 6 TO THE CORE MUST REST FLAT ON PCB, LEADS MUST BE TANGENT FLUSH WITH THE CORE EDGE, AS SHOWN (I.E. COIL REMOVE INSULATION AND TIN LEADS APPROX. 0.5 INCH
- 5 SPACER : FR4 OR EQUAL (UL 94-V0)
- 4 WIND BOTH COILS EVENLY SPACED CONSTRUCTION:
- 3 INTER-WINDING CAPACITANCE = 16.8 pF LEAKAGE INDUCTANCE = 0.620 uH CURRENT RATING = 23.0 AMPS DCR ON EACH WINDING = 2.0 MILLI-OHMS MAX L = 65 uH MIN. 10 KHZ, 250 mV SPECIFICATIONS:
- 2 WIRE: UL RECOGNIZED 155 °C OR 200°C (PREFERRED) RATED MAGNET WIRE CWS BYTEMARK OR OTHER APPROVED PART CORE: COATED FERRITE TOROID, HIGH PERM MNZN
- 1 RATING CLASS B (130°C MIN.) REQUIRED MATERIAL: UL RECOGNIZED 94V-0 FOR FLAMMABILITY

NOTES: UNLESS OTHERWISE SPECIFIED, COMMON MODE CHOKE

CODE	IDENT	MFG. P/N	DESCRIPTION	ITEM NO.
AUTOCAD		X		
SOLIDWORKS				
UNLESS OTHERWISE SPECIFIED				
DRAWN	KLC	12/22/09	TITLE:	
ENGR.	KLC	12/22/09	Common Mode Line Filter	
APPR.	KLC	12/22/09	65 uH Minimum, 23 Amp	
SCALE		B	SIZE DIM. NO.	REV
		2=1	CM-650U-23.0A	A